

Light efficiency:

109 Lumen/Watt

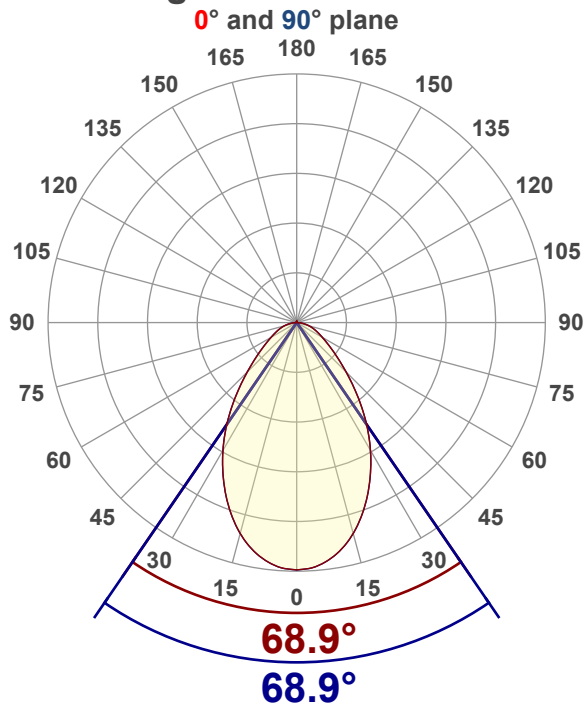
Color temperature:

3075 K

Light quality:

CRI:83.4, R_g:93.7, R_f:85.4**P: 3 / V: - / F: -****Output: 3120 lm****Peak: 2074 cd****Power: 28.6 W****Voltage: 120 V****Current: 0.240 A****PF: 0.99****THD: 5.77 %**

Angular Distribution



Product name:

EDGE-33-WH - DLC - 30K 30W

Test Date:

2019-05-31

Beam Angle (50% of the brightness of the centre):

68.9°

Field Angle (10% of the brightness of the centre):

127.3°

Cut Off Angle (2.5% of the brightness of the centre):

163.9°

Beam Details

*measured at centre of beam

Mounting Height (feet)\(meter)	Lux*	Footcandles*	Beam width (feet) / (meter)
4 ft / 1.2 m	1395 lx	130 fc	5.5 ft / 1.7 m
8 ft / 2.4 m	349 lx	32 fc	11 ft / 3.3 m
12 ft / 3.7 m	155 lx	14 fc	16.5 ft / 5 m
16 ft / 4.9 m	87 lx	8 fc	21.9 ft / 6.7 m
20 ft / 6.1 m	56 lx	5 fc	27.4 ft / 8.4 m

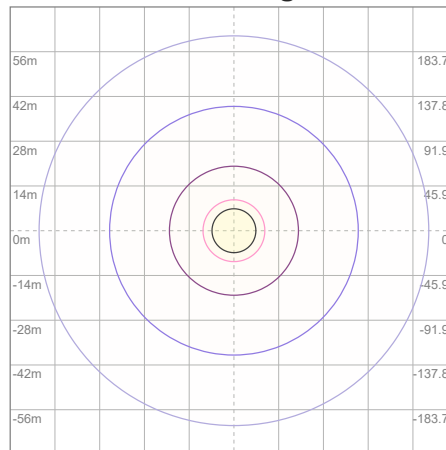
Beam center

Photometric Testing Report

Zonal Lumen Summary

Zone	Lumen	%Luminaire
0-30	1372	43.97%
0-40	2000	64.10%
0-60	2752	88.21%
60-90	341	10.93%
70-100	151	4.84%
90-120	11.8	0.38%
0-90	3092	99.10%
90-180	27.8	0.89%
0-180	3120	100.00%

ISO Lux Diagram



Lux at center:	223 lx
3%	6.69 lx
5%	11.15 lx
10%	22.30 lx
30%	66.90 lx
50%	111.50 lx

Conditions:
 Number of planes: 8
 Lux distribution on a surface when lamp is mounted at 3.05 meters from the surface.

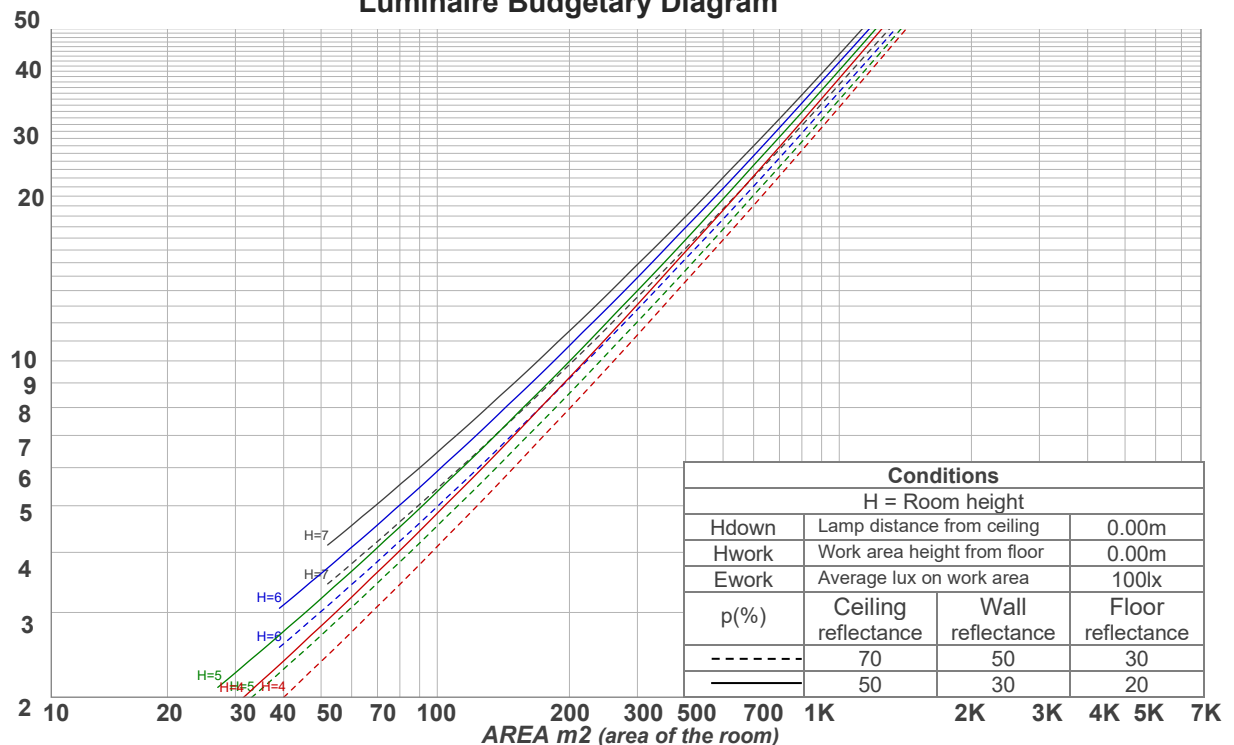
Mounting height: 3.05 meters (10 feet)

Coefficients of Utilization

Ceiling reflectance	80				70				50			30			10			0
Wall reflectance	70	50	30	10	70	50	30	10	50	30	10	50	30	10	50	30	10	0
Floor reflectance	20	20	20	20	20	20	20	20	20	20	20	20	20	20	20	20	20	0
RCR	(RCR: Room Cavity Ratio)				Room Values are expressed as percentage of Lumens delivered to the task surface													
0	119	119	119	119	116	116	116	116	111	111	111	106	106	106	101	101	101	99
1	111	107	103	100	108	104	101	98	100	98	95	96	94	92	92	91	89	87
2	103	96	90	85	100	94	89	84	90	86	82	87	84	80	84	81	79	77
3	95	86	80	74	93	85	79	74	82	77	72	79	75	71	77	73	70	68
4	89	79	71	65	86	77	70	65	75	69	64	72	67	63	70	66	62	60
5	83	72	64	58	81	71	63	58	68	62	57	67	61	57	65	60	56	54
6	77	66	58	53	75	65	58	52	63	57	52	61	56	51	60	55	51	49
7	72	61	53	48	71	60	53	47	58	52	47	57	51	47	56	50	46	45
8	68	56	49	44	67	55	48	43	54	48	43	53	47	43	52	47	43	41
9	64	52	45	40	63	52	45	40	50	44	40	49	44	39	48	43	39	38
10	61	49	42	37	59	48	41	37	47	41	37	46	41	37	45	40	36	35

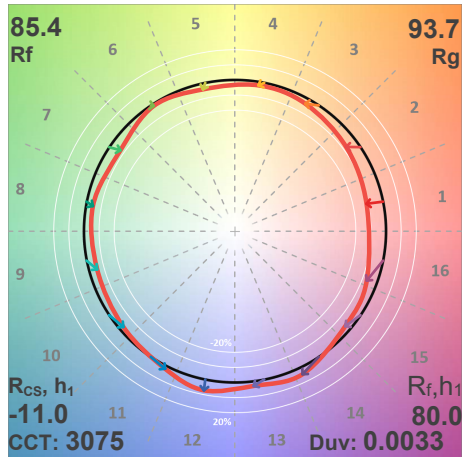
LAMPS (number of lamps)

Luminaire Budgetary Diagram

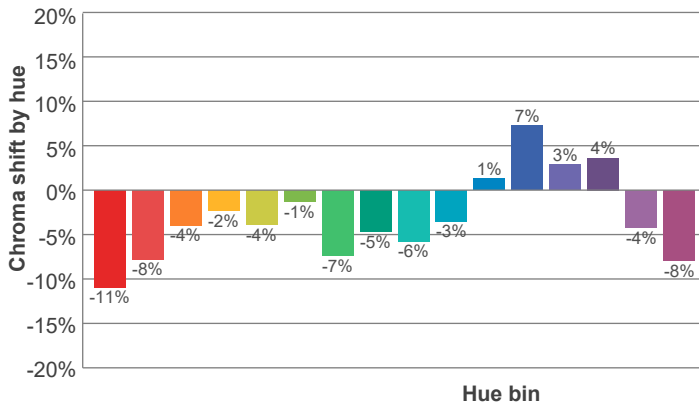
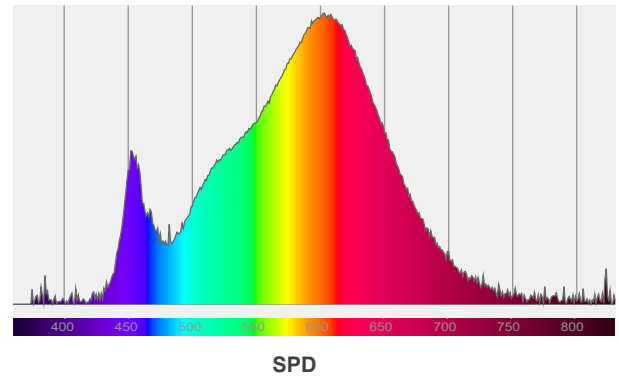
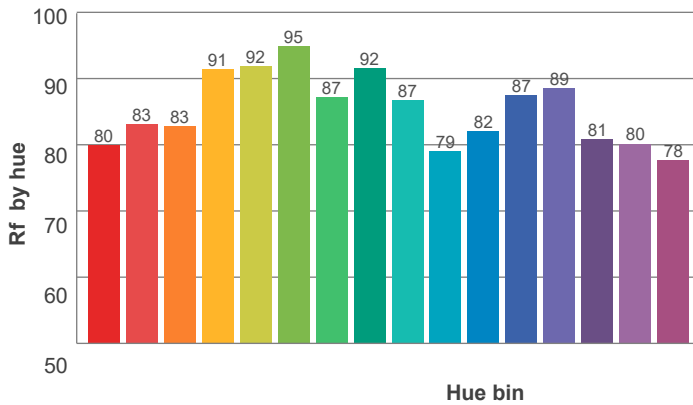
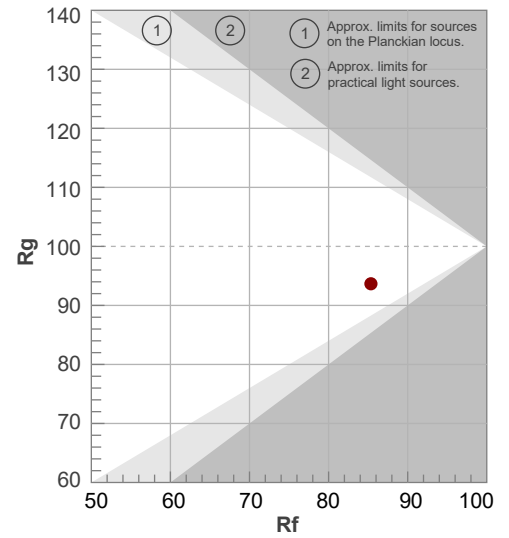


ANSI/IES TM-30-18

P: 3 / V: - / F: -



Hue Bin	R _f	Shifts (%)	
		Chroma	Hue
1	80	-11%	1%
2	83	-8%	5%
3	83	-4%	8%
4	91	-2%	3%
5	92	-4%	2%
6	95	-1%	-1%
7	87	-7%	-2%
8	92	-5%	2%
9	87	-6%	7%
10	79	-3%	12%
11	82	1%	12%
12	87	7%	1%
13	89	3%	-8%
14	81	4%	-15%
15	80	-4%	-12%
16	78	-8%	-15%



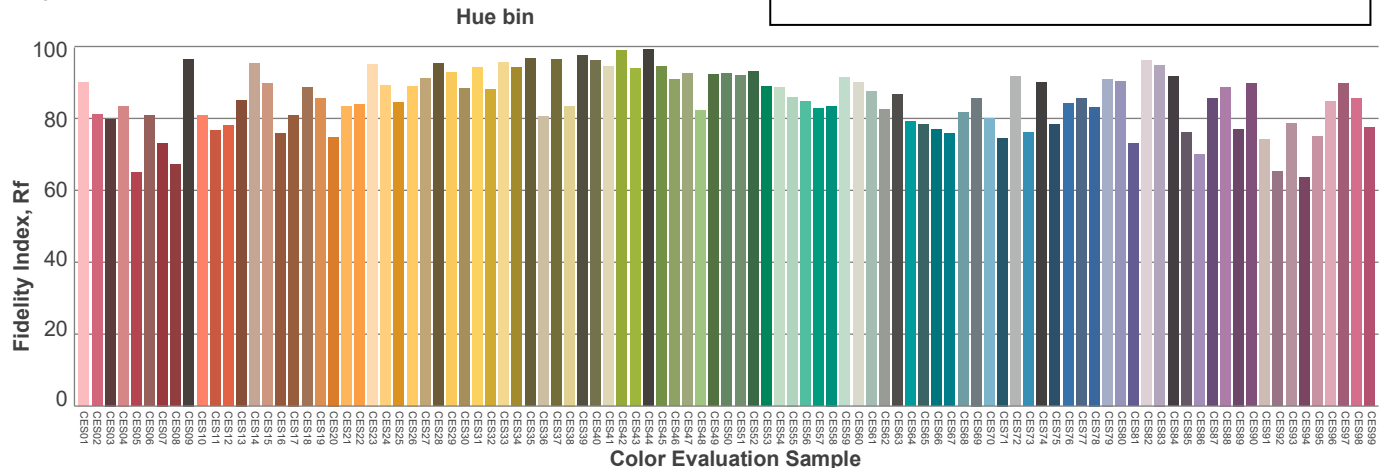
Red: 29.3%, Power=18.3mW

Blue: 9.4%, Power=16.9mW

Green: 27.2%, Power=35.8mW

UVA: 0.4%, Power=3.2mW

Dominant Wavelength: 582nm

1st Peak Wavelength: 603nm2nd Peak Wavelength: 452nm

Glare Evaluation According to UGR

Corrected, comprehensive UGR table according to 117-1995, S/H ratio=0.25

p Ceiling		70	70	50	50	30	70	70	50	50	30
p Walls		50	30	50	30	30	50	30	50	30	30
p Floor		20	20	20	20	20	20	20	20	20	20
Room size H = mounting height above eye level X Y		Viewing direction at right angles to lamp axis					Viewing direction parallel to lamp axis				
2H	2H	11.8	12.7	11.9	13.0	13.2	11.8	12.7	11.9	13.0	13.2
	3H	12.6	13.6	13.0	13.9	14.1	12.6	13.6	13.0	13.9	14.1
	4H	13.1	14.1	13.5	14.3	14.6	13.1	14.1	13.5	14.3	14.6
	6H	13.5	14.4	13.9	14.7	15.1	13.5	14.4	13.9	14.7	15.1
	8H	13.7	14.5	14.0	14.8	15.2	13.7	14.5	14.0	14.8	15.2
	12H	13.7	14.5	14.1	14.9	15.3	13.7	14.5	14.1	14.9	15.3
4H	2H	12.0	13.0	12.4	13.3	13.5	12.0	13.0	12.4	13.3	13.5
	3H	13.3	14.1	13.7	14.4	14.9	13.3	14.1	13.7	14.4	14.9
	4H	13.8	14.6	14.3	15.0	15.5	13.8	14.6	14.3	15.0	15.5
	6H	14.3	15.1	14.9	15.4	15.8	14.3	15.1	14.9	15.4	15.8
	8H	14.5	15.2	15.0	15.6	15.9	14.5	15.2	15.0	15.6	15.9
	12H	14.6	15.2	15.1	15.6	16.1	14.6	15.2	15.1	15.6	16.1
8H	4H	14.1	14.7	14.6	15.1	15.5	14.1	14.7	14.6	15.1	15.5
	6H	14.7	15.2	15.2	15.7	16.2	14.7	15.2	15.2	15.7	16.2
	8H	15.0	15.4	15.5	16.0	16.6	15.0	15.4	15.5	16.0	16.6
	12H	15.2	15.5	15.8	16.1	16.7	15.2	15.5	15.8	16.1	16.7
12H	4H	14.1	14.6	14.6	15.0	15.5	14.1	14.6	14.6	15.0	15.5
	6H	14.8	15.2	15.3	15.8	16.4	14.8	15.2	15.3	15.8	16.4
	8H	15.1	15.4	15.7	16.0	16.6	15.1	15.4	15.7	16.0	16.6
Variation of the observer position for the luminaire distance S											
S = 1.0H		0.2 / -0.3					0.2 / -0.3				
S = 1.5H		0.6 / -0.6					0.6 / -0.6				
S = 2.0H		1.1 / -0.9					1.1 / -0.9				
Corrected glare indices referring to 3120 lm total luminous flux											